



February 2013

Issue: 29

# MetroWest

Center for Independent Living, Inc.

## February

We thought that Governor Patrick's pro-active storm preparations did help the state get back to normal more quickly. And we appreciated the improved access to information. The remaining icy sidewalks continue to be a barrier to many people with disabilities.

The changes to health care programs for Dual Eligibles is imminent. We've included articles about the program, the timelines, and upcoming forums. It's a confusing topic, but one that many of us will need to understand. As long as concerns continue to be voiced, addressed and handled, the program has a good chance of being a positive step forward in health care for people with disabilities.

from Paul W. Spooner,  
Executive Director of MWCIL

## Housing Investment

### HUD AND HHS TO PROVIDE HOUSING TO PEOPLE WITH DISABILITIES

Massachusetts is one of 13 recipients who share \$98 million in rental assistance for extremely low-income people with disabilities to prevent institutionalization and homelessness. The Massachusetts Department of Housing and Development will receive \$5,276,452 in rent subsidy for 100 units.

"HUD's support of these state agencies is made possible through the Section 811 Project Rental Assistance Demonstration Program (PRA Demo) which enables persons with disabilities who earn less than 30 percent of median income to live in integrated mainstream settings. The state housing agencies are working closely with their state Medicaid and Health and Human Service counterparts to identify, refer, and conduct outreach to persons with disabilities who require long-term services and supports to live independently."

The entire press release from February 12 can be read at the [HHS website](#).

HUD: U.S. Department of Housing and Urban Development  
HHS: U.S. Department of Health and Human Services



### In This Issue

[Housing Investments](#)

[Sequestration](#)

[IL Education Day](#)

[Summer Camp and Recreation Expo](#)

[Emergency Preparedness for People with SCI](#)

[IL State Plan](#)

[Duals Overview](#)

[Duals Timeline](#)

[Duals Forum](#)

[Duals Forum](#)

[SALS Training](#)

[Brain Injury Conference](#)

[Shared Use Paths](#)

### Donations

If you appreciate MWCIL and the support it provides you, please consider a gift of any amount. By showing your appreciation and giving back, MWCIL can provide more services for the community. We thank you! Go to [MWCIL Webpage](#) or click on the Donate button.

Donate



## Sequestration

### Confused?

Join the crowd if you're confused about what the Sequestration will mean to you, and why it's even happening. Unfortunately, we'll all have to wait and see. MetroWest Center for Independent Living does not anticipate having to immediately reduce our services, however, some of the agencies that we use may have reductions. We encourage everyone to contact the Senate and Congress, and ask them to do their jobs. Budget cuts need to be made thoughtfully. The Sequestration was designed to be so awful that our government would not let it happen...

## Statewide Independent Living Education Day

The Massachusetts Statewide Independent Living Council invites you to join them and educate your legislators on our priorities. The agenda consists of lunch and speakers in the Great Hall. At noon, everyone visits their Representative and Senator to tell them what Independent Living means in their lives. If you can attend, call your legislator today and invite them for lunch, and schedule an afternoon time to visit with them.

When: Thursday, March 21, 11 a.m. - 3 p.m.

Where: The Great Hall at the State House in Boston

Contact: Email [info@masilc.org](mailto:info@masilc.org) for more information.



State Senator Karen Spilka at 2012 Education Day

Download the [flyer](#) for more details.

## Summer Camp and Recreation Expo For Children with Special Needs

All online gifts are tax deductible. *We couldn't carry out our important mission without you!*

### About Us:

[MWCIL website](#)  
(past issues are available at our website)

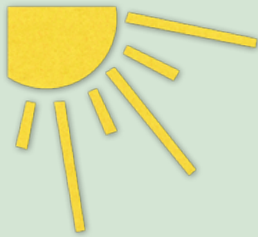
### Email

Phone: 508-875-7853  
280 Irving Street  
Framingham, MA  
01702

[Find us on Facebook](#) 

[Join Our Mailing List!](#)





The Framingham Special Education Parents Advisory Council is sponsoring their sixth annual Summer Camp and Recreation Expo for Children with Special Needs. Representatives from more than 30 camps and recreational organizations will be there to speak to parents and children.

When:

Sunday, March 3, 2013  
12-3 p.m.

Where:

Framingham High School  
115 A Street  
Framingham

Admission: Free

(Snow Date: Sunday, March 10)

Contact: [campexpo@f-sepac.org](mailto:campexpo@f-sepac.org)

More information at the website: [www.f-sepac.org](http://www.f-sepac.org)

## Emergency Preparedness

Developing a Personal Emergency Preparedness Plan for Individuals with Spinal Cord Injury  
by Jeffrey Dougan of MOD

The [New England Spinal Cord Injury Center](#) and [Spaulding-Harvard SCI Model System](#) are offering this event as both a Webcast and Lecture.

"During this lecture, Jeffrey Dougan will provide an overview of the MOD (MA Office on Disability) and state efforts on Emergency Preparedness for people with SCI. He will offer valuable information about how consumers can advocate for their needs by having a plan in place before emergencies occur. Mr. Dougan will discuss important elements to include when developing a Personal Emergency Preparedness Plan. He'll describe how to prepare an emergency backpack to "grab and go" when needed, and will review helpful items included in "Go Packs" provided by the MOD for individuals with disabilities. Mr. Dougan will also review additional state and national resources to help prepare for emergency situations."

When:

Thursday, March 14 6:30 - 8:00 p.m.

Where:

Spaulding Rehabilitation Hospital  
2nd Floor, Cafeteria  
125 Nashua Street  
Boston MA 02114  
(parking at Spaulding Rehab Hospital for \$5)

Dinner and Lecture:

\$10 if before 3/7/2013. \$20 at the door.

[Register Here for Dinner and Lecture](#)

Contact Helen Stott at [hstott@partners.org](mailto:hstott@partners.org)

Online Webcast and Live Chat:

Free

[Register Here for Webcast](#)

Contact: [Judi.Zazula@bmc.org](mailto:Judi.Zazula@bmc.org) or 617-638-7314

## State Plan for Independent Living

### Public Hearings

The Massachusetts Statewide Independent Living Council will be holding two public hearings on the next State Plan for Independent Living. We are now in the final year of the current State Plan for Independent Living (SPIL), and have begun to develop the next three year State Plan. The MASILC will be soliciting feedback on some specific topics.

#### Natick

When:

Thursday, March 15 at 1 - 4 p.m.

Where:

Morse Institute Library  
14 East Central Street  
Natick, MA 01760

Note: This hearing directly follows the MASILC quarterly meeting at the same location.

#### Chicopee

When:

Tuesday, March 26 from 1:30 - 4 p.m.

Where:

Chicopee Public Library  
449 Front Street  
Chicopee, MA 01013

Contact Jim Clark at [info@masilc.org](mailto:info@masilc.org) or 508-620-7452 with questions.

Visit the [MASILC website](#) for the details.

## Dual Eligibles Demonstration Overview

The "Dual Eligible Demonstration Program" is being implemented in Massachusetts using Integrated Care Organizations (ICOs). This new program is for people age 21-64 who are eligible for both MassHealth and Medicare. The program combines the funding, and will attempt to provide higher quality care at a lower cost than MassHealth and Medicare provide separately.

Goals and Objectives

- Alleviate the fragmentation / improve coordination of services
- Enhance quality of care

- Reduce state and federal costs
- Improve the member experience in accessing care
- Deliver person-centered care
- Promote independence in the community
- Improve quality, eliminate cost-shifting, and achieve cost savings

#### Consumer Benefits when enrolled in an ICO

- Health care and support services currently covered by MassHealth and by Medicare:
  - medical care
  - behavioral health care
  - prescription drugs
  - long-term services and supports
- Patient Centered Medical Home (PCMH) system of health care. PCMH is based on each consumer having a primary care provider and care team who work with him or her to develop a care plan
- ICO care coordinator and independent long-term services and support (LTSS) coordinator
- Simplified contact system for customer service, prior authorizations, appeals, etc.
- Chronic disease management
- Reminders for check-ups, tests, and medications
- Personal care attendant (PCA) services, Adult Foster Care, Group Adult Foster Care, Adult Day Health as needed (unless in a Medicaid waiver program where these services are already provided)

When the Integrated Care Organization system is ready to enroll members, consumers may choose to enroll in any ICO that serves your area. Most Massachusetts residents will have several choices. If a dual eligible consumer does not choose an ICO, one will be selected for him or her. Consumers do not have to participate in the ICO program, and may opt out at any time and return to receiving benefits from Medicare and MassHealth.

When enrolling in an ICO, each person chooses a primary care provider from the ICO's network. The primary care provider will be responsible for evaluating medical and behavioral health needs and making sure the consumer gets all of the services and supports needed. The consumer and the primary care provider, along with a team of health professionals, will decide on the care plan that works best.

If you are in this Dual Eligible category, you should be receiving more information in the mail fairly soon. We recommend you read it! And ask questions!

## Dual Eligible Demonstration Implementation Timeline

>From Mass.gov at [Duals Related Information](#).

ICO Selection Announcement	November 2, 2012

Readiness Review	November 2012 - March/April 2013
3-Way Contracts	March/April 2013
Learning Collaboratives	March 2013 - Ongoing
Implementation Activities	
Stakeholder Workgroups: Quality, Notices, Outreach, Admin. Simplification	December 2012 - Ongoing
Implementation Council	February 2012 - Ongoing
Ombudsperson	May 2013 - Ongoing
Public Awareness Campaign	April 2013 - Ongoing
Member Outreach Activities (Members can begin to select ICOs for effective date July 1, 2013)	May 2013 - Ongoing
Self-Selected Enrollments Begin	July 1, 2013
Auto-assignments Effective (Members notified at least 60 days prior to the effective date)	October 1, 2013; January 1, 2014

## DAAHR Forum on Dual Eligibles

Disability Advocates Advancing our Health Care Rights is sponsoring a forum on the upcoming Dual Eligible Demonstration.

Join other disability advocates to listen, share and learn. Enrollment in Integrated Care Organizations is only months away. Some remaining concerns include Protecting PCA's and Provider Choice. Attendees are welcome to voice other concerns.

When:

Wednesday, March 13 from 1:30 -3:30 p.m.

Where:

Saxe Room, Worcester Public Library  
3 Salem Square  
Worcester

Contact:

Allegra Stout at [astout@bostoncil.org](mailto:astout@bostoncil.org) or (617) 338-6665.

Download the [flyer](#) for more information.

## Arc Duals Family Forum

### Are you confused about the Dual Eligible Demonstration?

Northeast Arc, CLASS/The Arc of Greater Lawrence, EMARC, The Arc of Haverhill/Newburyport and The Arc of Massachusetts are hosting this dinner and forum for families of Dual Eligible people.

If your son or daughter is currently receiving Day Habilitation, Personal Care Attendant Services or Adult Foster Care services, he or she may be impacted by the Dual Eligible Demonstration. You may contact your current provider for verification. There also is a likelihood that the Dual Eligible initiative will continue to expand in the years ahead and you should be aware of its goals and implications.

When:

Tuesday, March 26 at 6 - 8 p.m.

Where:

Cascia Hall  
Merrimack College  
North Andover

Contact:

(617) 338-6665

[Registration link](#). Registration is limited to 200 people.

Download the [flyer](#) for more information.

## Self Advocacy Leadership Training

Mass Developmental Disability Council is sponsoring a free 9 week program that helps people with developmental disabilities to gain the skills that they need to be leaders in their local communities.

A maximum of 12 class members are selected through an application process. Applicants must be a person with a developmental disability. Applicants are chosen based on their answers to the questions on the application and on their willingness to attend and participate in all classes. Each class lasts for 2 hours.

For more information, visit the [website](#).

Application Deadline:

March 13

Application Form:

[Download the Application](#)

Contact:

Lee Larriu at (617)770-7676 ext. 118 or

[Lee.Larriu@state.ma.us](mailto:Lee.Larriu@state.ma.us)

Classes Begin:

March 27

Where:

North Shore Community College  
Lynn Campus



## Brain Injury Conference

At the 32nd annual Brain Injury Conference, attendees can learn about such topics as resilience skills for compassion fatigue, the impact of communication on stroke survivors with aphasia and their caregivers, current research and information on TBI and associated disorders with our returning veterans and trusts for brain injury survivors.

Keynote Speaker Dr. Carolyn Roy-Bornstein will discuss her new memoir [Crash, A Mother, a Son, and the Journey from Grief to Gratitude](#) .

When:

Thursday, March 28

7 a.m. - 4:30 p.m.

Where:

Best Western Royal Hotel and Plaza  
Marlborough, MA

Contact: [education@biama.org](mailto:education@biama.org) or (508) 475-0032

For more information, visit the [Brain Injury Association of Massachusetts website](#).

## Shared Use Paths

The U.S. Access Board has released for public comment proposed requirements for accessible shared use paths used by pedestrians, bicyclists, and others for transportation or recreation. The proposal can be found at the [Access Board's website](#).

Supplemental provisions, as well as instructions for submitting comments are found at another [Access Board webpage](#).

The deadline for comments is May 14, 2013.

Contact: Scott Windley at [row@access-board.gov](mailto:row@access-board.gov) or call (202) 272-0025 (voice), or (202) 272-0028 (TTY)

[Join Our Mailing List!](#)

and visit our website

[MetroWest Center for Independent Living](#)

[Forward email](#)



Try it FREE today.

This email was sent to [srorke@mwcil.org](mailto:srorke@mwcil.org) by [srorke@mwcil.org](mailto:srorke@mwcil.org) | [Update Profile/Email Address](#) | Instant removal with [SafeUnsubscribe™](#) | [Privacy Policy](#).

MetroWest Center for Independent Living | 280 Irving Street | Framingham | MA | 01702